

AGROMETEOROLOGICAL BULLETIN

Doc No: TEA 3/3/7/2 F-004

Revision No: 1

Effective Date: 01.07.2017

Page No: 1 of 4

Approved by:

**REPORTING PERIOD:
01 – 10 OCTOBER 2017**



ISSUE No.: 01

SEASON: 2017/18

RELEASED: 16/10/2017

CONTENTS

HIGHLIGHTS	1
CONTENTS	1
RAINFALL SYNOPSIS AND PROGNOSIS	1
RAINFALL AND TEMPERATURES	2
RAINFALL	2
TEMPERATURES	2
MAIZE AND OTHER CROPS	3
MAIZE CROP STAGE AND CONDITION	3
OTHER CROPS	3
CURRENT FARMING ACTIVITY	3
LIVESTOCK AND PASTURES	3
WATER SITUATION	3
MEDIUM-TERM OUTLOOK	3
RAINFALL	3
TEMPERATURE	3
SOIL MOISTURE	3
WIND SPEED	3

HIGHLIGHTS

- **About average rainfall received...**
- **No much improvement in vegetation....**
- **Very little farming activity observed....**
- **Light rainfall forecasted.....**
- **Warm to hot temperatures anticipated.....**
- **Insignificant soil moisture expected.....**

RAINFALL SYNOPSIS AND PROGNOSIS

➤ SYNOPSIS - PAST TEN DAYS

Improved rainfall was received during the first dekad (ten-days) of October 2017 indication the on-set of the rainfall season. The rainfall amounts are about average and much above that of the previous 2016/17 season.

➤ PROGNOSIS - NEXT TEN DAYS

Occasional light rainfall is expected to during the outlook period.

AGROMETEOROLOGICAL BULLETIN

Doc No: TEA 3/3/7/2 F-004
 Revision No: 1
 Effective Date: 01.07.2017
 Page No: 2 of 4
 Approved by:

RAINFALL AND TEMPERATURES

RAINFALL

About average rainfall was received during the first dekad of October 2017. The rainfall season is observed to be setting off on progressive start since September (Figure 1).

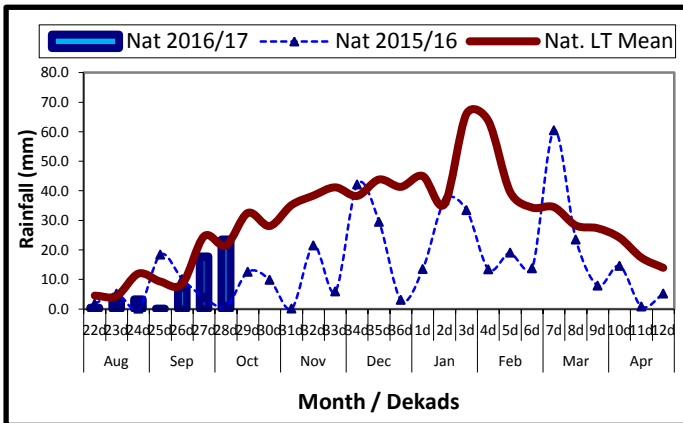
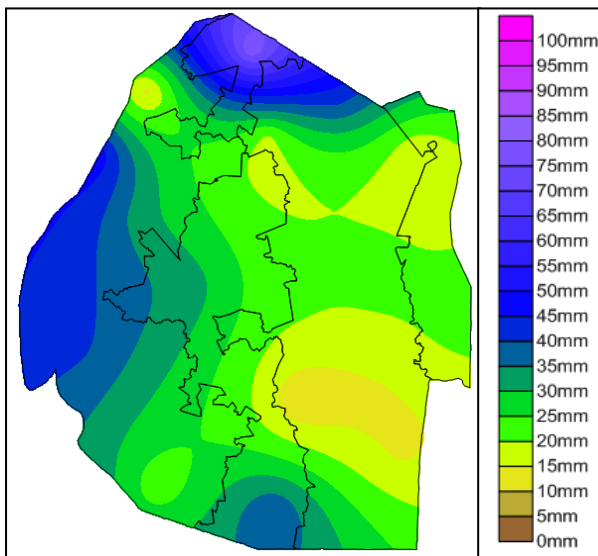


Figure 1: Rainfall distribution as first dekad of October 2017



Map 1: Spatial rainfall distribution for first dekad October 2017

Average rainfall was observed in the Highveld and Lubombo Plateau while the

Middleveld and Lowveld observed slightly above average rainfall (Table 1).

Table 1: Rainfall (mm) for 1st dekad October 2017

	HV	MV	LV	LP
2015/16	3	1	0	0
Average	26	23	14	22
2016/17	27	29	17	22
Anomaly	0	6	3	0

TEMPERATURES

Cold to warm temperatures were observed throughout the country as most stations recorded below average temperatures (Figure 2). Only Bigbend experienced temperature above its normal maximum temperature (Figure 3).

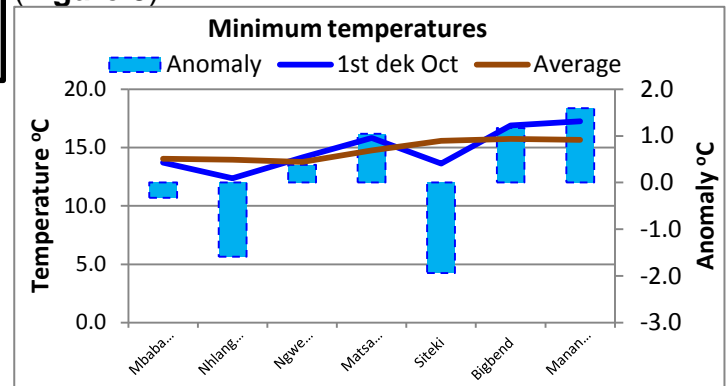


Figure 2: Minimum temperature as first dekad of October 2017

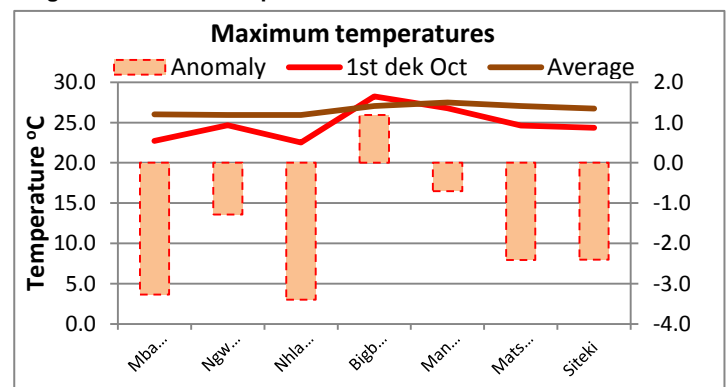


Figure 3: Maximum temperature as first dekad of October 2017

AGROMETEOROLOGICAL BULLETIN

Doc No: TEA 3/3/7/2 F-004

Revision No: 1

Effective Date: 01.07.2017

Page No: 3 of 4

Approved by:

MAIZE AND OTHER CROPS

MAIZE CROP STAGE AND CONDITION

Fields are still to be ploughed and maize yet to be planted (**Picture 1**).



Picture 1: Un-ploughed fields at Mlindazwe area in the Shiselweni region

OTHER CROPS

No other crops have been planted.

CURRENT FARMING ACTIVITY

Farmers are busy with purchasing farming inputs, such as, seeds, fertilizer and tractor service. Most farmers rely on government subsidy, hence are awaiting delivery of their inputs to their various Rural Development Areas (RDAs) in the country

Very few farmers have started land preparation activities.

LIVESTOCK AND PASTURES

Livestock reported to be in poor to average condition due to poor grazing areas as a result of insufficient rainfall during the winter season. Vegetation is

most dire in most parts of the Lowveld and Lubombo Plateau (**Image 1**).



Picture 2: Cattle grazing at Hluthi

WATER SITUATION

Water levels in major dams in the country are at satisfactory levels and rivers have adequate flows. There are very few cases of dried up water sources.

MEDIUM-TERM OUTLOOK

RAINFALL

Occasional light rain in some parts of the country forecasted in the outlook period.

TEMPERATURE

Warm to hot temperatures expected in the outlook period.

SOIL MOISTURE

Insignificant amount of soil moisture anticipated in the outlook period.

WIND SPEED

Wind will be light to moderate breeze speeds in the outlook period.

AGROMETEOROLOGICAL BULLETIN

Doc No: TEA 3/3/7/2 F-004

Revision No: 1

Effective Date: 01.07.2017

Page No: 4 of 4

Approved by:

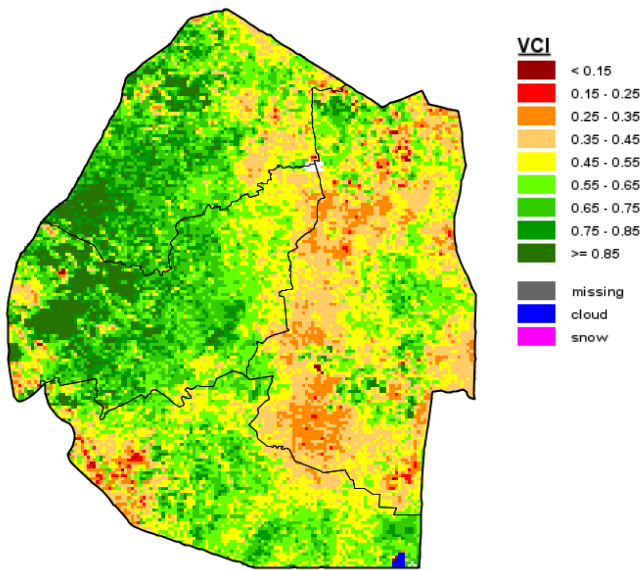


Image 1: Vegetation Condition Index image (1st Dekad October 2017) Source: FAO-GIEWS

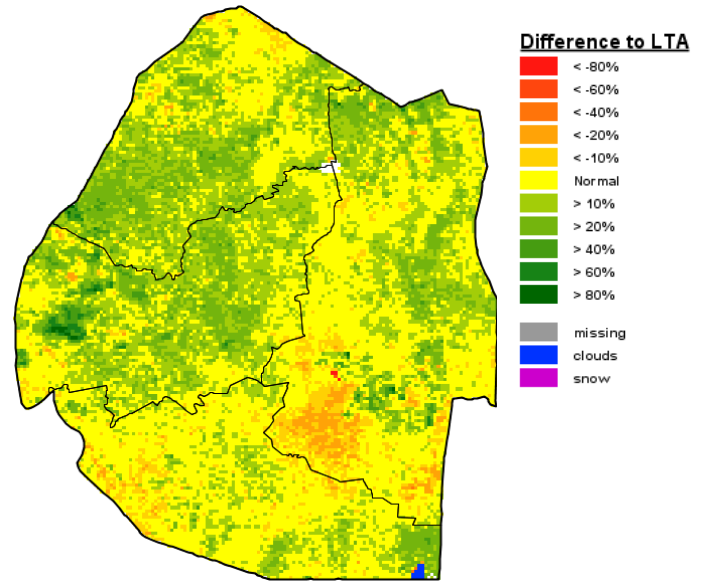


Image 2: Vegetation Anomaly image (1st Dekad October 2017) Source: FAO-GIEWS